

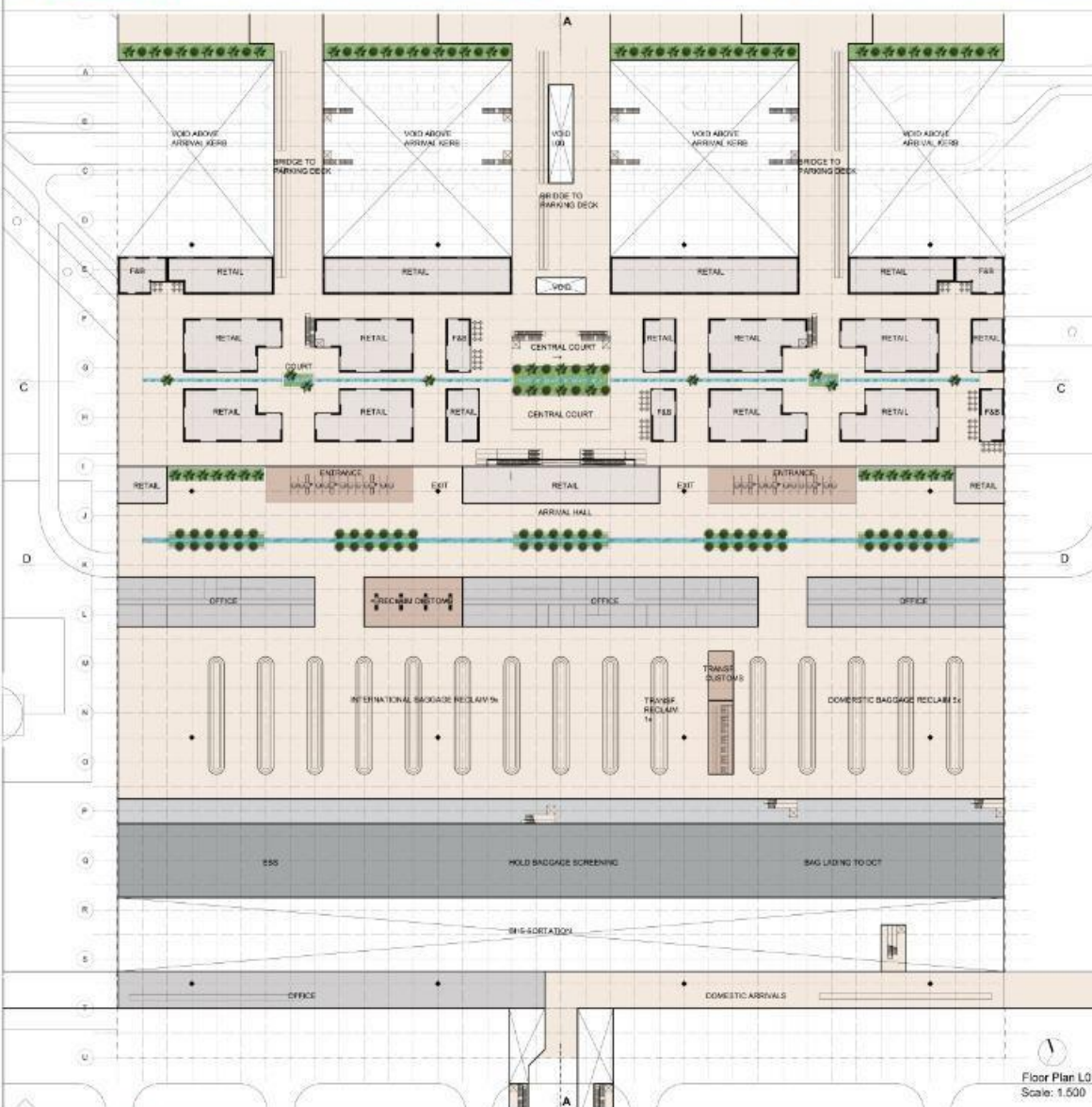
# Architectural Design Competition of IranShahr Terminal, IKIA (Imam Khomeini International Airport)

Following jury session on 11/06/2019 and members of the jury decision on 16/06/2019 on the subject of Architectural Design Competition of IranShahr Terminal of IKIA, GMP consulting firm in partnership with Rah Shahr Architectural Consultants was awarded the “First Prize” as the best design.





View From Arrival Hall (L01)



Floor Plan L01  
Scale: 1:500

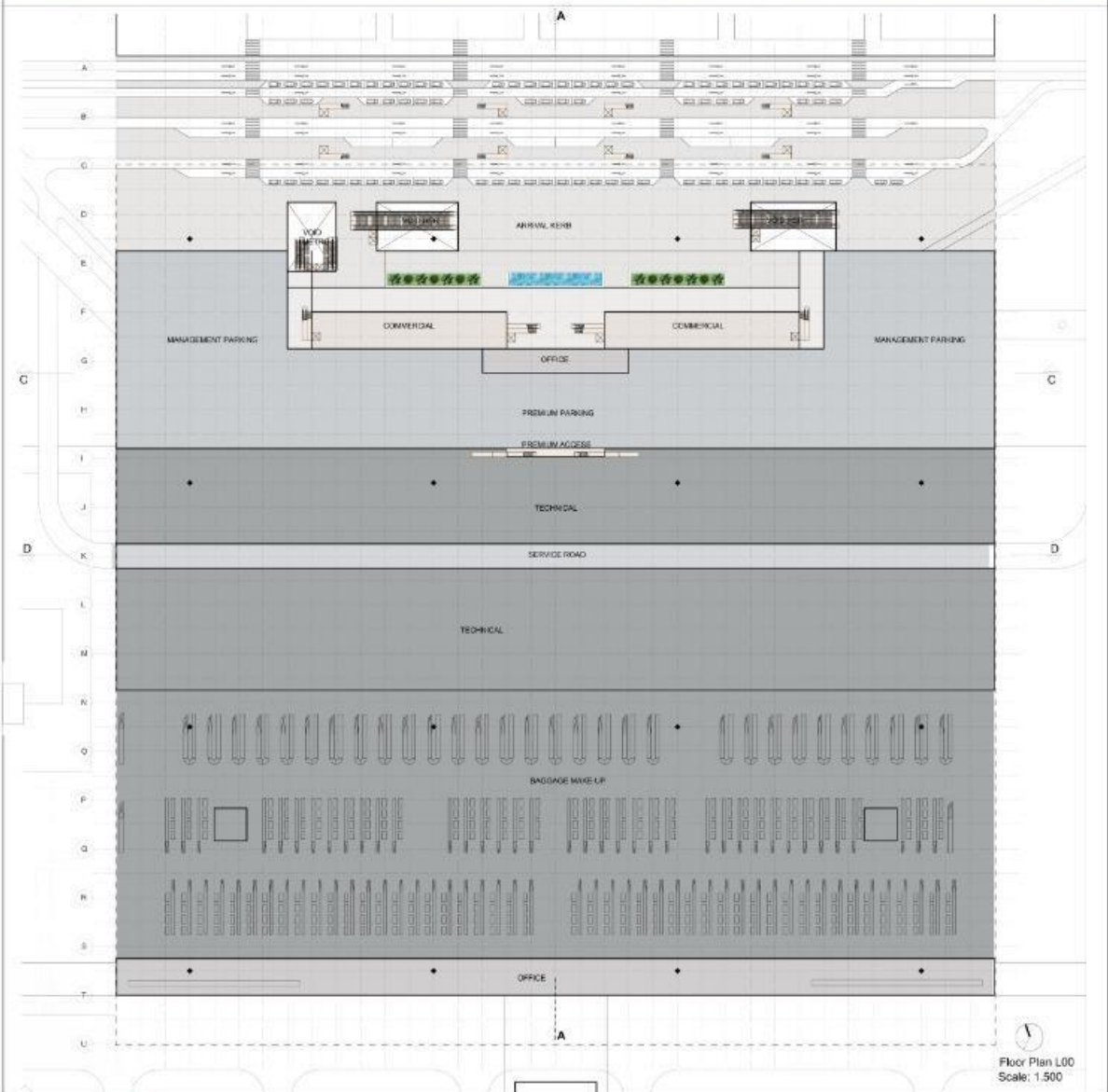




View of Landscape Facade from Arrival Kerb (L00)



View from Parking Bridge (L01)



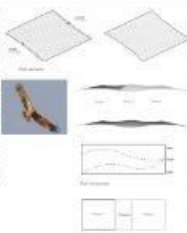
Floor Plan L00  
Scale: 1:500



Bird's-eye view Terminal (final phase)

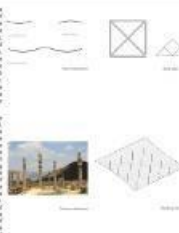
**Vision, Inspiration and Concept**

The vision for the IranShahr International Terminal is a modern, functional, and aesthetically pleasing structure that serves as a gateway to the city of Shiraz. The design is based on the concept of a 'terminal as a public space', where the building is not just a transit point but a place where people can gather, relax, and enjoy the view. The terminal is designed to be a landmark building that reflects the rich cultural heritage of Iran and the natural beauty of the region. The architecture is inspired by the traditional Persian architecture, with its emphasis on geometric forms and intricate details. The terminal is designed to be a sustainable building that uses green building practices and materials. The design is a blend of modern and traditional architecture, creating a unique and memorable experience for travelers.



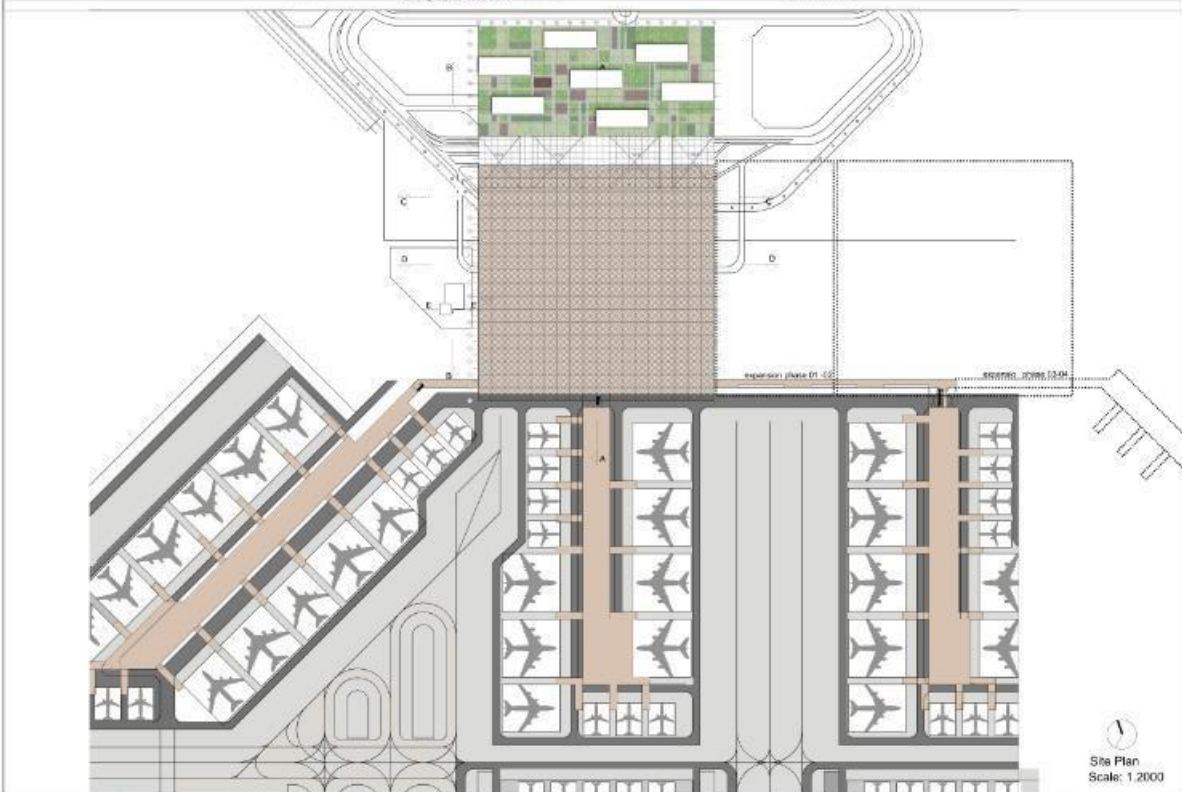
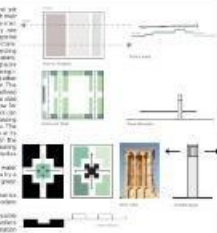
**Roof**

The roof is a key architectural element which defines the top of the terminal building. It is designed to be a functional and aesthetic element that provides shade and protection for the passengers. The roof is designed to be a sustainable building that uses green building practices and materials. The design is a blend of modern and traditional architecture, creating a unique and memorable experience for travelers. The roof is designed to be a landmark building that reflects the rich cultural heritage of Iran and the natural beauty of the region. The architecture is inspired by the traditional Persian architecture, with its emphasis on geometric forms and intricate details.



**Internal spaces**

The internal spaces are designed to be a functional and aesthetically pleasing environment that provides a comfortable and convenient experience for passengers. The terminal is designed to be a landmark building that reflects the rich cultural heritage of Iran and the natural beauty of the region. The architecture is inspired by the traditional Persian architecture, with its emphasis on geometric forms and intricate details. The terminal is designed to be a sustainable building that uses green building practices and materials. The design is a blend of modern and traditional architecture, creating a unique and memorable experience for travelers.



Site Plan Scale: 1:2000





13 D26L

IranShahr International Terminal



Night bird's-eye view Terminal ( Phase 01)



Night bird's-eye view Terminal (Final Phase)



IranShahr Terminal Architectural Vision Competition of IKAC







View from Departure Hall

**Usability - operations and logistics**

The terminal is designed to be a place of high efficiency and high safety, and to facilitate passenger flow and to provide them with a pleasant experience. The terminal is designed to be a place of high efficiency and high safety, and to facilitate passenger flow and to provide them with a pleasant experience. The terminal is designed to be a place of high efficiency and high safety, and to facilitate passenger flow and to provide them with a pleasant experience.

**Sustainability**  
 The terminal is designed to be a place of high efficiency and high safety, and to facilitate passenger flow and to provide them with a pleasant experience. The terminal is designed to be a place of high efficiency and high safety, and to facilitate passenger flow and to provide them with a pleasant experience.



**Materialization**

The terminal is designed to be a place of high efficiency and high safety, and to facilitate passenger flow and to provide them with a pleasant experience. The terminal is designed to be a place of high efficiency and high safety, and to facilitate passenger flow and to provide them with a pleasant experience.



**Special Features**

The terminal is designed to be a place of high efficiency and high safety, and to facilitate passenger flow and to provide them with a pleasant experience. The terminal is designed to be a place of high efficiency and high safety, and to facilitate passenger flow and to provide them with a pleasant experience.



View from Check-in



View from Check-in



Public viewing terrace



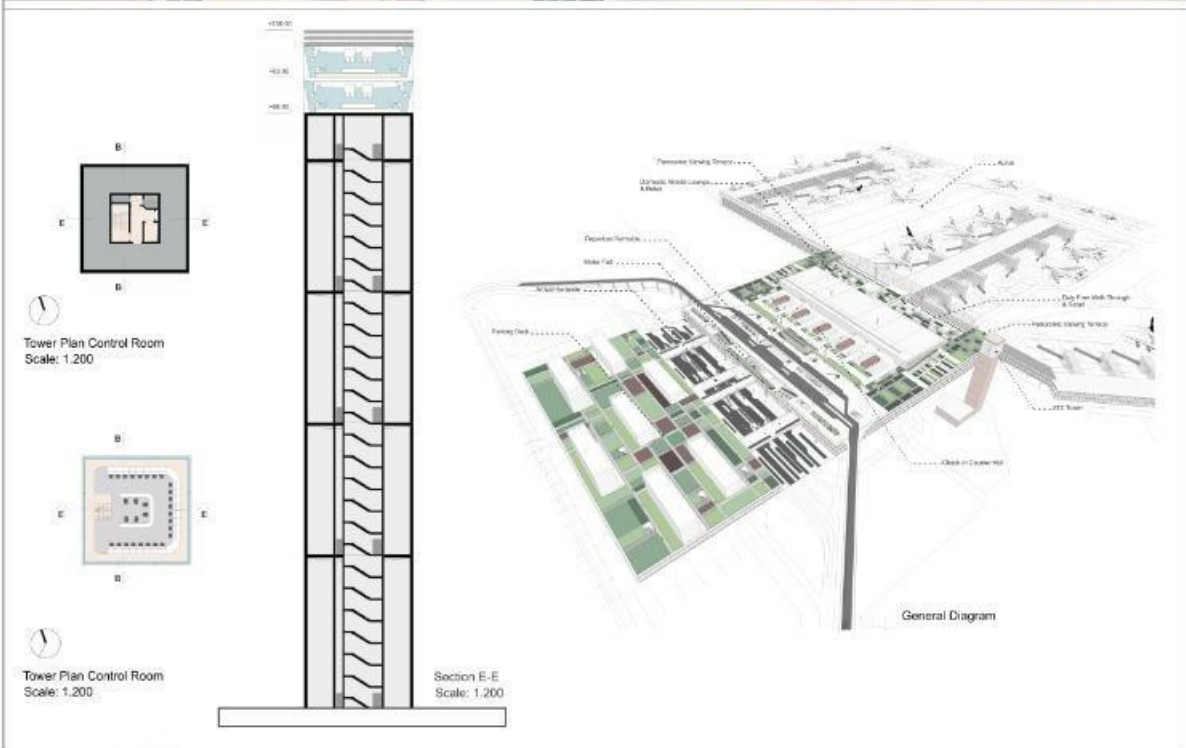
View Roof from Parking Deck(L02)



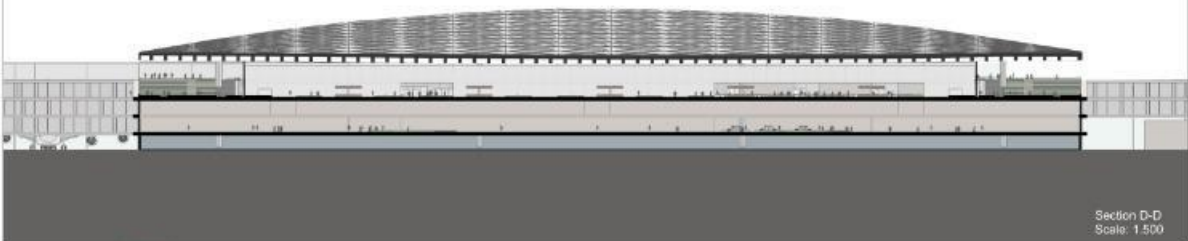
View from Public Terrace Garden (L03)



View from Arrival Retail (L01)





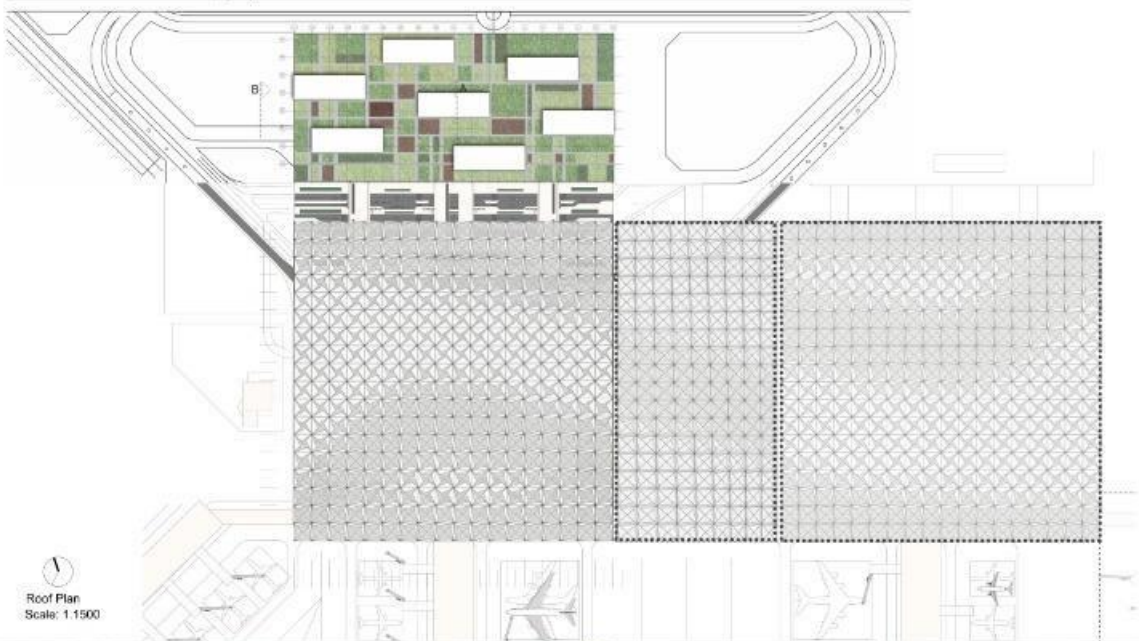






08 D26L

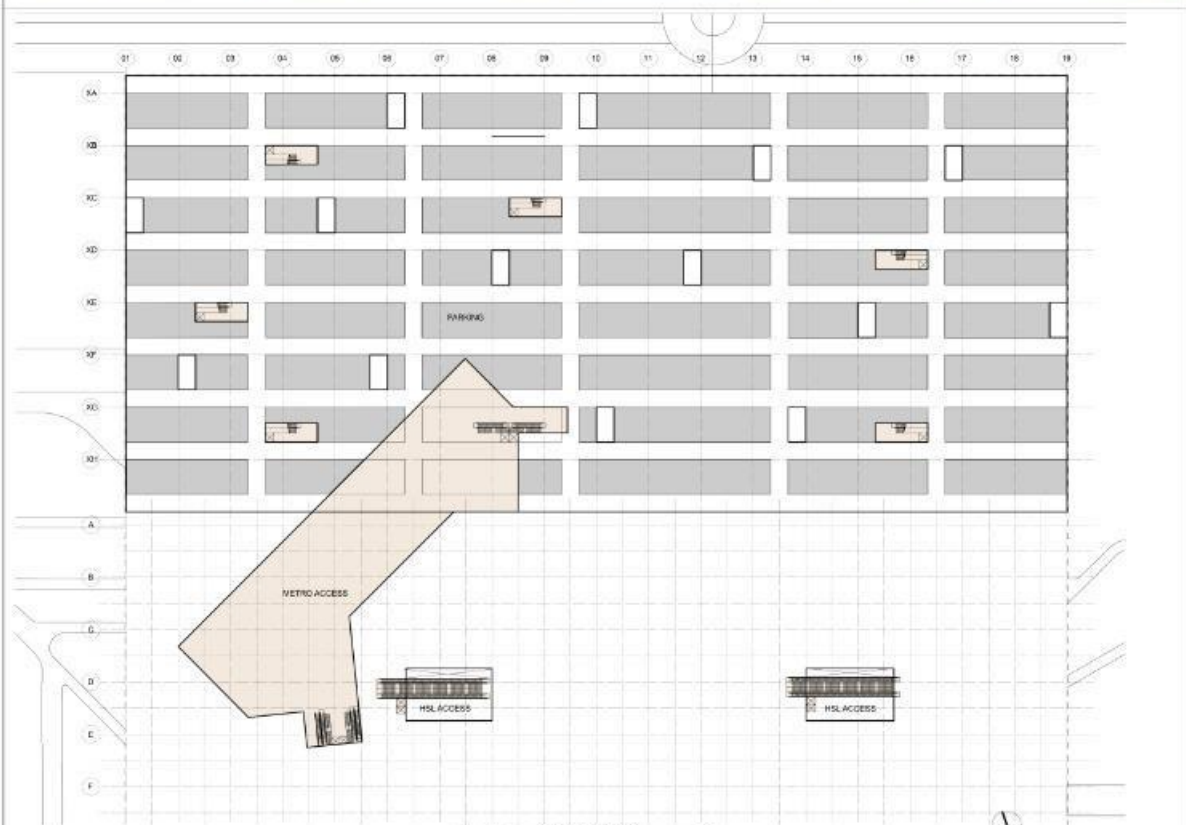
IranShahr International Terminal



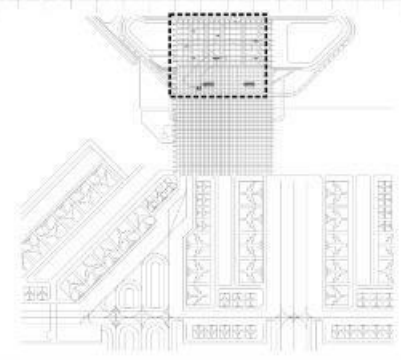
IranShahr Terminal Architectural Vision Competition of IKAC

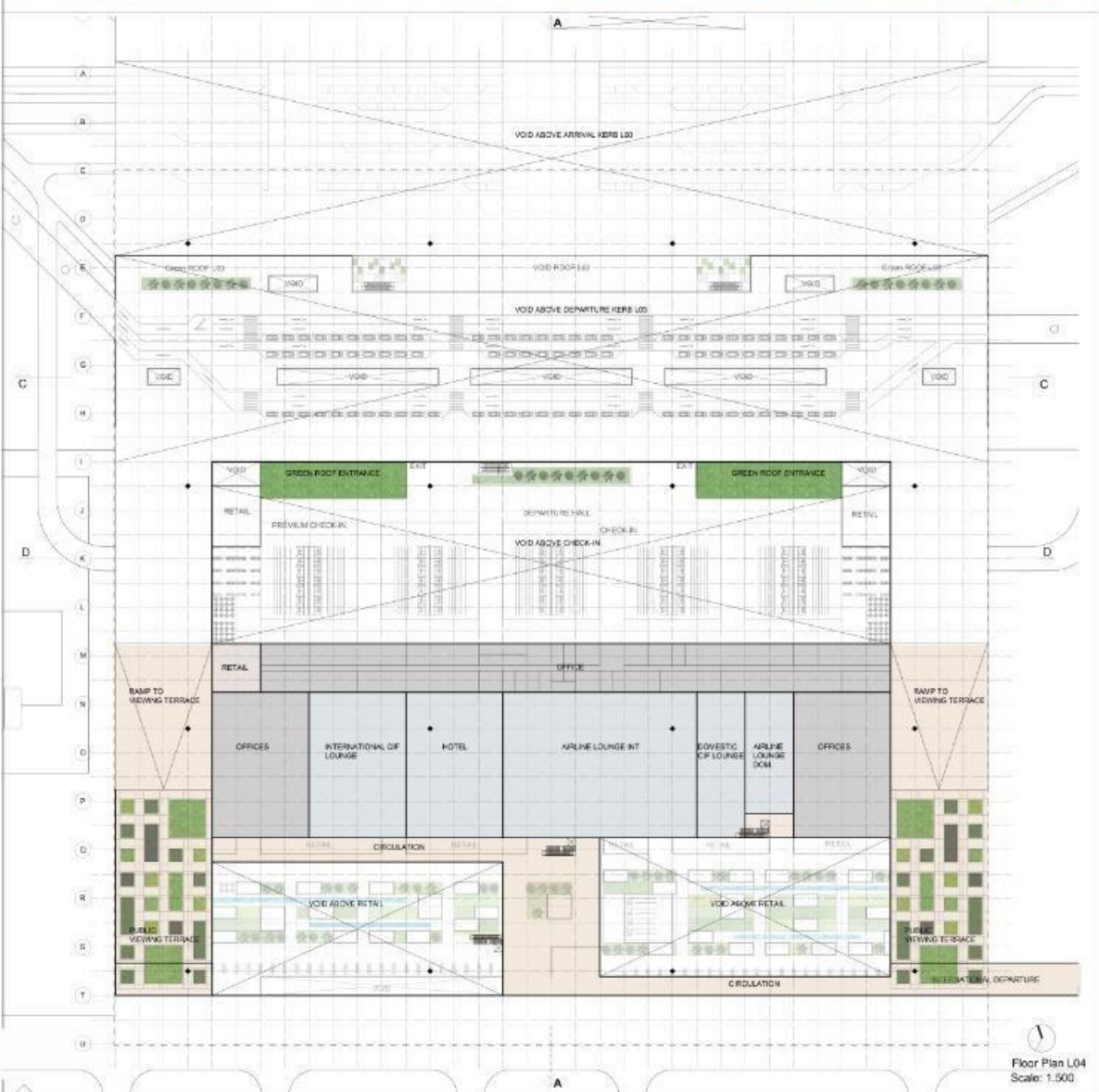






Floor Plan L-01  
Scale: 1:500

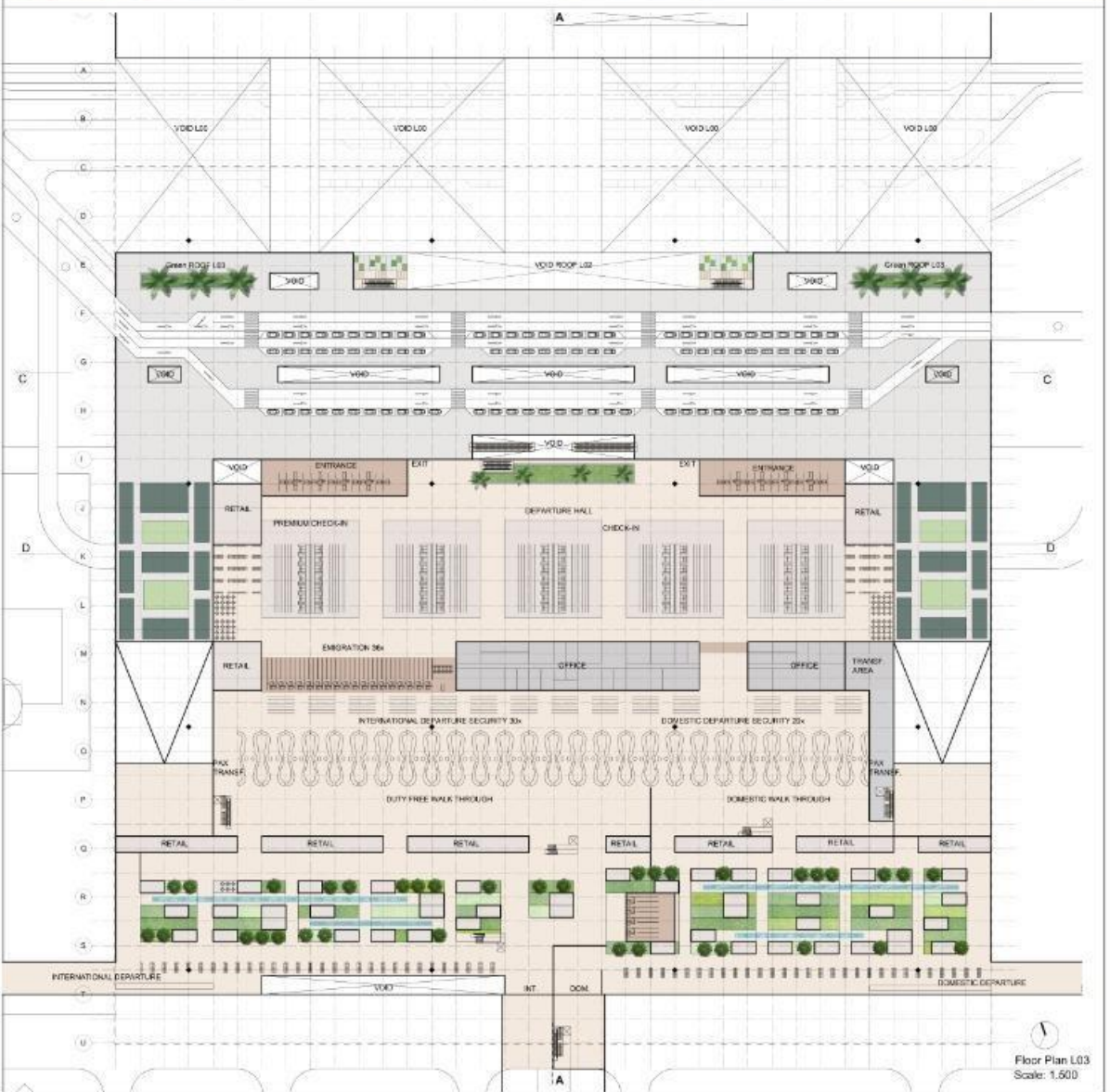








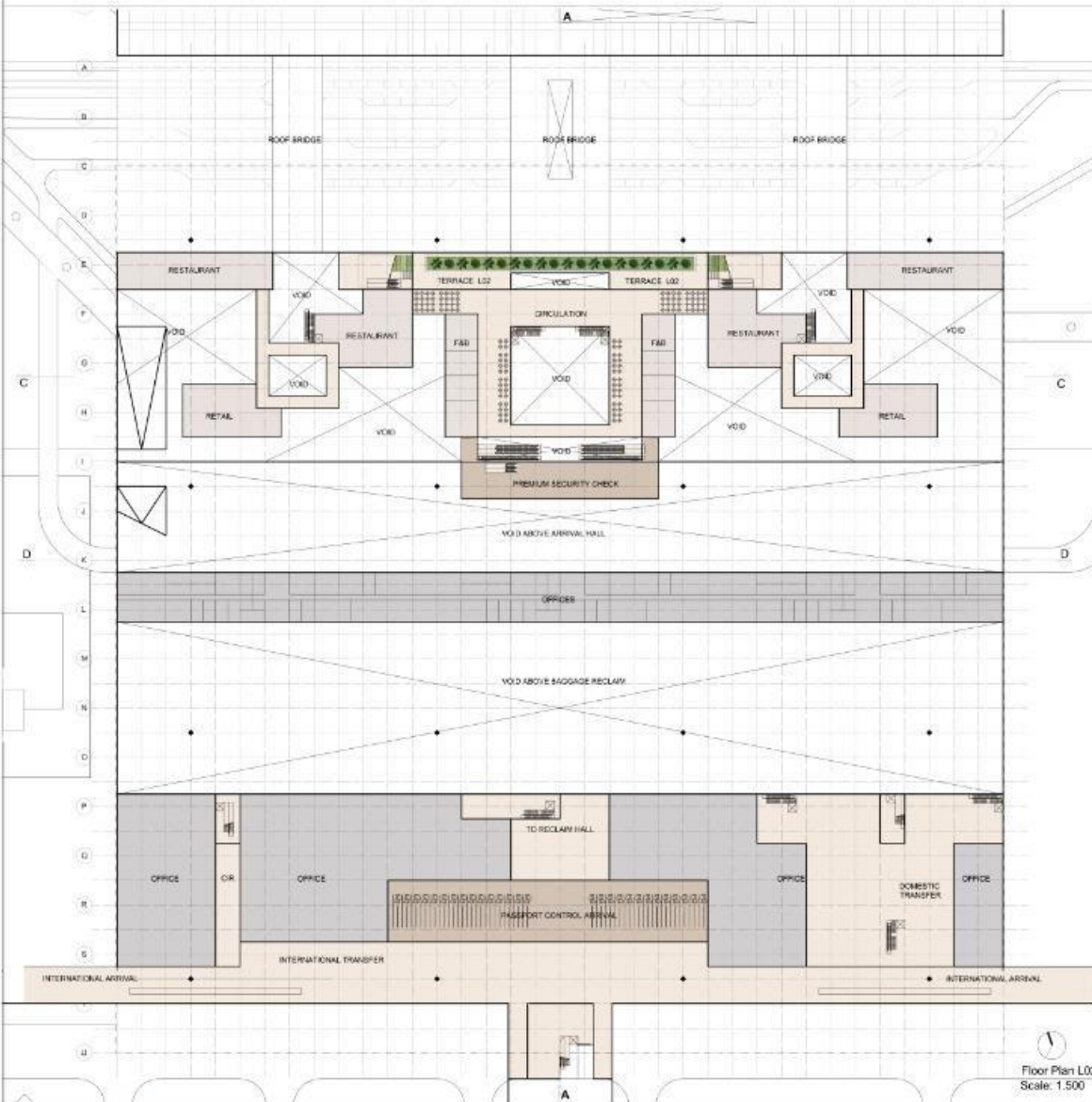
View main entrance from departure kerb(L03)



Floor Plan L03  
Scale: 1:500



View landside facade from parking bridge (L01)



Floor Plan L02  
Scale: 1:500





Night bird's-eye view Terminal (Phase 01)



Night bird's-eye view Terminal (Final Phase)